



FRONT-MOUNT MULCHER

HM SERIES

Shearex’s hydraulic mulcher is the ultimate tool for fast and efficient roadside maintenance, invasive species removal, land clearing, and underbrush maintenance. The front-mount hydraulic mulcher is the best forestry mulcher head and offers the speed and power to complete any land-clearing job. For utmost efficiency, pair your skid steer forestry mulcher with the optional hydraulic push-bar!

G 2.0 BALANCE QUALITY

Our mulchers respect the highest balancing standard in the industry. Enhance your performance by using the Shearex mulchers, ensuring smoother operation, reducing vibration and minimizing stress on the carrier.



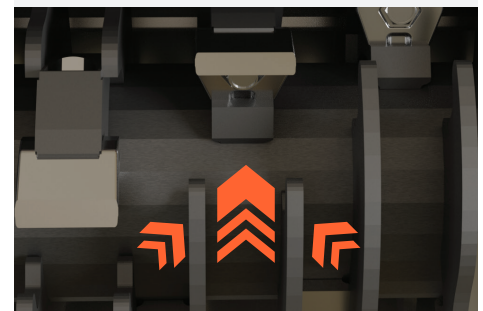
BLADE ANGLE OPTIMISED FOR A PERFECT CUT

Our blade mount design provides greater durability and cutting power. The rotor maintains its power throughout the tooth life.



PROTECTION SYSTEM CONVEX DX™

Our unique protection system is made of four fins types that limit the amount of material cut with each pass and concentrates smaller material toward the center of the blades.

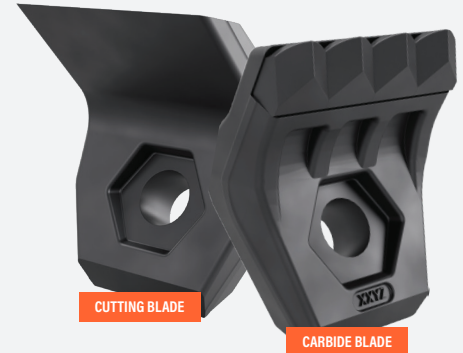


NOW AVAILABLE 2 TYPES OF BLADES

Depending on your operation, choose between 2 blade types when ordering your mulcher to provide maximum durability to your equipment.

Shearex **carbide blades** are available for all of your land clearing operation in soil with stones. Choose these blades for land clearing near roads, where asphalt parts can be found, or in fields where the ground could be more rocky. These hammers provide ground breaking durability to your equipment.

We also offer **cutting blades** which are very efficient for cutting material on smooth soils, land clearing operation and forestry application. The blade angle provides a high efficiency.



		HM-60SR	HM-70SR	HM-70DR	HM-70SV	HM-90SV	HM-100SV2
--	--	---------	---------	---------	---------	---------	-----------

		HM-60SR	HM-70SR	HM-70DR	HM-70SV	HM-90SV	HM-100SV2
Recommended Minimum Carrier Power	HP (KW)	68 (50)	74 (55)	74 (55)	125 (95)	170 (127)	250 (190)
Cutting Width	IN (CM)	58.625 (149)	74.75 (190)	74.75 (190)	74.75 (190)	90.75 (230)	100 (254)
Cutting Distance from Cutting Ground Level	IN (CM)	0.4 (1)	0.4 (1)	0.4 (1)	0.4 (1)	0.4 (1)	0.4 (1)
Number of Blades on Rotor		21	27	27	24	33	36
Optimal Target Material Diameter	IN (CM)	6 (15)	8 (20)	8 (20)	10 (25)	15 (40)	24 (60)
Exterior Length	IN (CM)	49.25 (125)	49.25 (125)	48 (122)	48.75 (124)	46.5 (118)	46.5 (118)
Exterior Height	IN (CM)	50.625 (129)	50.625 (129)	57.3 (146)	58.75 (149)	52.625 (134)	59 (150)
Exterior Width	IN (CM)	72.063 (183)	89 (226)	89 (226)	90 (228.25)	106 (269)	118 (299.25)
Rotor Diameter	IN (CM)	17,625 (45)	17,625 (45)	17,625 (45)	20 (50)	20 (50)	20 (50)
Approximate Typical Weight	LBS (KG)	2,300 (1,043)	3,000 (1,361)	3,285 (1,490)	3,640 (1,655)	4,272 (1,938)	5,094 (2,311)

HYDRAULICS

		HM-60SR	HM-70SR	HM-70DR	HM-70SV	HM-90SV	HM-100SV2
Variable Displacement Axial Piston Motor	CC	80	110	110	160	160	2x160
Min. Required Continous Flow	GAL/MIN (L/MIN)	23 (87)	33 (133)	33 (133)	52 (197)	52 (197)	95 (360) for 160cc 70 (265) for 110cc
Max. Operating Pressure	PSI (BAR)	6,000 (410)	6,000 (410)	6,000 (410)	6,000 (410)	6,000 (410)	6,000 (410)
Rotating Speed	RPM	2,600	2,600	2,600	2,500	2,300	2,300
Pressure Line I.D.	# (IN)	#12 (0.75)	#16 (1)	#16 (1)	#16 (1)	#16 (1)	#20 (1.25)
Return Line I.D.	# (IN)	#12 (0.75)	#16 (1)	#16 (1)	#16 (1)	#16 (1)	#20 (1.25)
Drain Line I.D.	# (IN)	#10 (0.625)	#10 (0.625)	#10 (0.625)	#10 (0.625)	#10 (0.625)	#16 (1)

FEATURES

	HM-60SR	HM-70SR	HM-70DR	HM-70SV	HM-90SV	HM-100SV2
Bolt-on Liner	Included	Included	Included	Included	Included	Included
Mechanical Pushbar	Included	Included	Included	Included	Included	Included
Hydraulic Pushbar	N/A	N/A	N/A	Optional	Optional	Optional
Front Deflector	N/A	N/A	Included	N/A	N/A	N/A
Hydraulic Motor Option	N/A	N/A	N/A	N/A	N/A	2 x 110cc